



AWEX RFID WAREHOUSE INTEGRATION PROJECT

Functionality for basic operation

FIVE BASIC FUNCTIONS

1. Receivals
2. Storing wool pre-testing
3. Core testing
4. Storing wool post coring
5. Deliveries

TWO EXTRA FEATURES

1. Stock take
2. Find a bale



RECEIVALS

The ability to have a RFID reader at the receipt area to:

- a. verify bales that have been previously received from an e-speci
- b. manually add bales to the system after capturing all bale RFIDs from the receipt

RECEIVALS



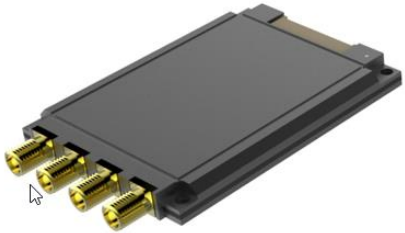


STORING WOOL PRE CORING

Once the wool is captured into the system, the operator can update the location of the bales within the wool store.

This would update the system with that location for easy access to coring.

STORING WOOL PRE-TESTING



A5020 Linear Extreme Antenna



7" IN-CAB TABLET PC



CORE TESTING

A RFID reader at the core line could verify that the bales going through the core are the correct bales based on the bales that are displayed on the screen. The reader could prompt the lot to appear from the scanned bale, and that bale would be highlighted ready for weighing.

The verification would highlight the presence of any bales that should not be included in a lot.

CORE TESTING



STORING WOOL POST CORING

Once the wool is cored, the operator can update the location of the bales within the wool store. This would update the system with that location for easy access for delivery.

STORING WOOL POST CORING



DELIVERIES

Bales can be read going into a dump and be allocated to a specific tri-pack.

Delivery instruction of bales would include the RFID on the paperwork and would be pre-loaded onto handhelds or forklift units to allow operators to collect the bales ready for delivery.

The verification of the correct bales would be very important for the delivery process.

DELIVERIES



STOCK-TAKE & FIND A BALE

